

# Valves series A1

## 1/2", 3/2, pneumatically operated



Standard executions			
Version	Symbol	Code	Item
3/2 NC		034116	A1P430
3/2 NO		034127	A1P431
3/2 pilot/pilot		034128	A1P432



**CE** **II 2Gc IIB T5**  
**II 2Dc T100°C**

On request, they can be supplied according to 2014/34/EU - **ATEX**

Series of spool valves, with static seals, high flow, for panel mounting.

2

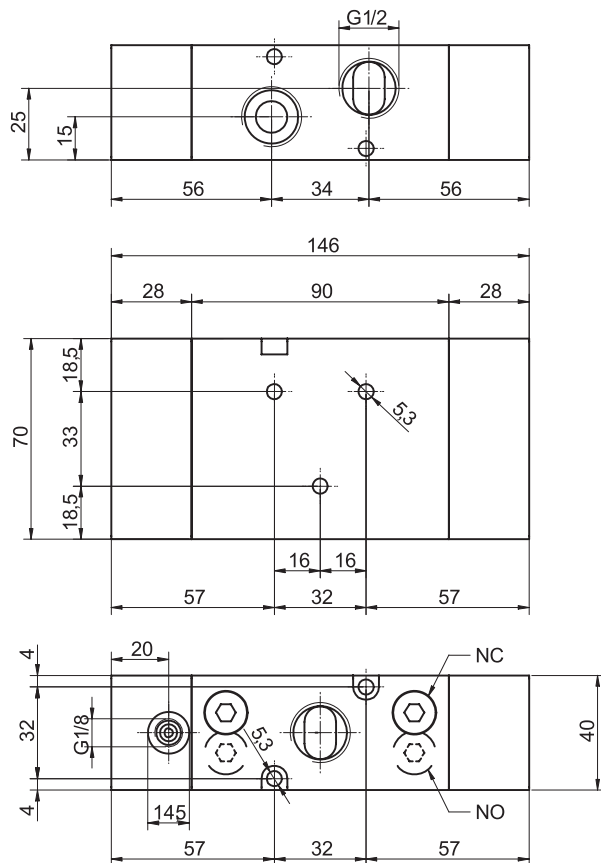
Options	Suffix
Low temperature seals (-25 ÷ +60°C)	<b>BT</b>

### Code key

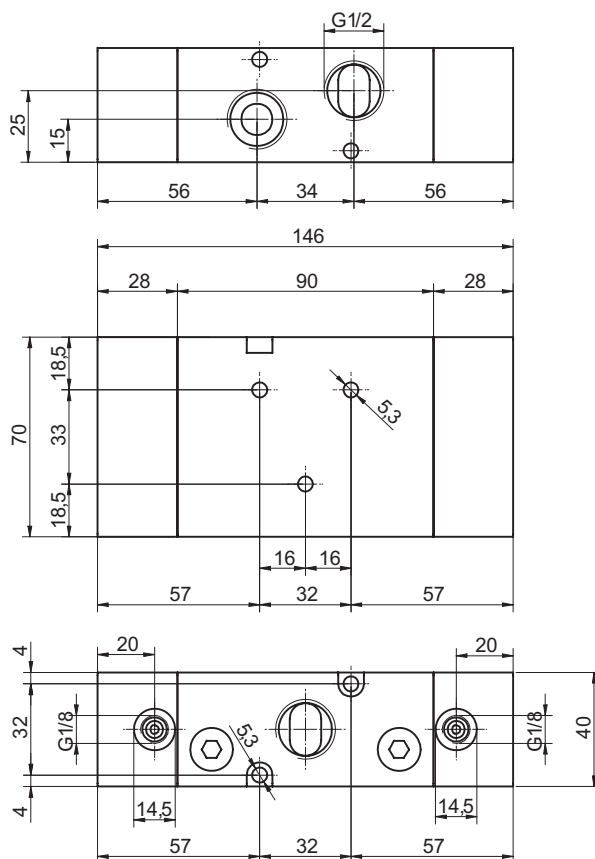
Series	Actuation	Size	Function	Options
A1	P = pneumatic	4 = 1/2"	30 = 3/2 NC 31 = 3/2 NO 32 = 3/2 pilot/pilot 33 = 3/2 pilot/pilot differential	BT = low temp. seals

Technical data	
Fluid	Compressed filtered air with or without lubrication. Lubrication, if started, must be continued.
Pressure range	2,5 ÷ 10 bar
Temperature range	-10°C ÷ +60°C (standard)      -25°C ÷ +60°C (BT)
Orifice	15 mm
Flow	2900 NI/min at 6 bar with ΔP 1 bar
Minimum piloting pressure	Spring return: 2,5 bar      Bistable: 1 bar
Mounting	In any position
Materials	Body: Anodised aluminium Covers: Anodised aluminium Spool: Hard aluminium anodized Distancers: Aluminium Seals: Hydrogenated Nitrile Butadiene Rubber (HNBR)

Valves series A1  
1/2", 3/2, pneumatically operated



Version	Symbol	Code	Item
3/2 NC		034116	A1P430
3/2 NO		034127	A1P431



Version	Symbol	Code	Item
3/2 solenoid/solenoid		034128	A1P432