

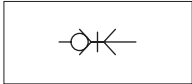
# Quick-lock couplings

## Series 21, DN 5 = 20 mm<sup>2</sup>

In Brass



Version	Type
Coupling with male metric thread DIN 2353	21KAAD
Coupling with male BSP parallel thread ISO 228	21KAAW
Coupling with female metric thread DIN 13	21KAIM
Coupling with female BSP parallel thread ISO 228	21KAIW
Coupling with hose adapter	21KATF
Coupling with rapid fitting	21KAKO
Coupling with bulkhead rapid fitting	21KAKS
Coupling with bulkhead hose adapter	21KATS
Coupling with rapid fitting and anti-deflection spring	21KAKK
Plug with hose adapter	21SFTF
Plug with rapid fitting	21SFKO
Plug with bulkhead rapid fitting	21SFKS
Plug with bulkhead hose adapter	21SFTS
Plug with rapid fitting and anti-deflection spring	21SFKK
Plug with male metric thread DIN 2353	21SFAD
Plug with male BSP, parallel thread ISO 228	21SFAW
Plug with male metric thread DIN 13	21SFIM
Plug with female BSP, parallel thread ISO 228	21SFIW



Series of quick-lock couplings single shut off (only on the coupling), standard in brass (not nickel plated).

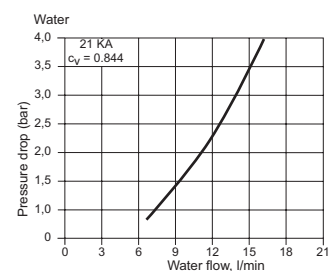
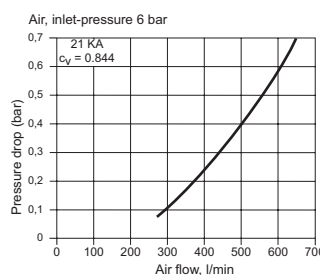
The quick-lock couplings series 21, in general the most common as to dimensions, can be used in various fields.

The connection tightness between the coupling and the plug is guaranteed by a series of spheres and this allows a longer life time even when the connections and the disconnections are frequent.

For standard items, codes and dimensions see tables from page 4.45.12.

On request these couplings can be supplied (special executions):

- Double shut off
- With coupler body completely in stainless steel AISI 303 or AISI 316.
- With special seals (FKM or EPDM).
- Nickel plated (standard or chemical nickel plating)
- Without shut off valves

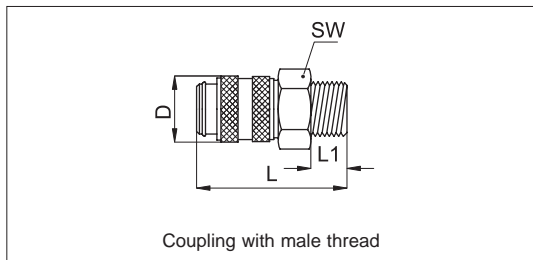
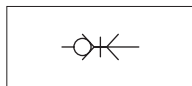


Technical data	
Fluid	Compressed air, water, non-aggressive fluids
Pressure range	35 bar (Vacuum resistance: 750 mm. Hg)
Temperature range	-20 °C ÷ 100 °C
Parallel threads	UNI - ISO 228/1 (BSP)
Metric threads	DIN 13 - DIN 2353
Materials	Coupler body, valve, releasing sleeve: Brass OT58 Springs and elastic ring: Stainless steel AISI 301 Balls: Stainless steel AISI 420 Seals: Nitrile rubber (NBR)

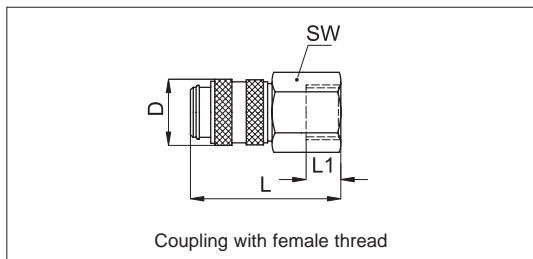
# Quick-lock couplings

## Series 21, DN 5 = 20 mm<sup>2</sup>

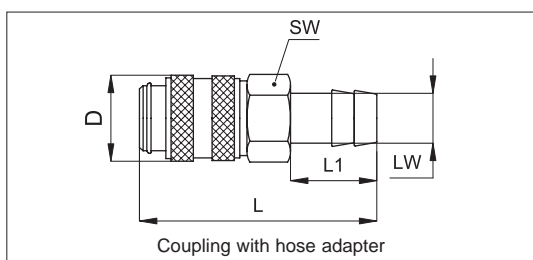
In Brass



Code	Item	Thread	SW	L	D	L <sub>1</sub>
570043	21KA AW10 MPX	1/8"	14	36	16	7
570044	21KA AW13 MPX	1/4"	17	38	16	9
570045	21KA AW17 MPX	3/8"	19	38	16	9
570046	21KA AD12 MPX	M12x1,5	17	39	16	10
570047	21KA AD14 MPX	M14x1,5	17	39	16	10

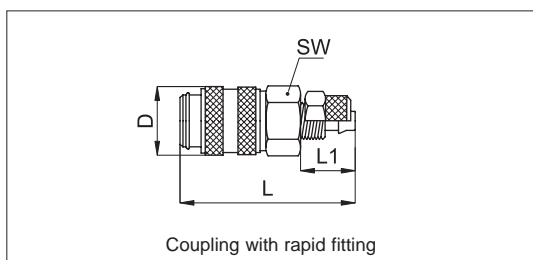


Code	Item	Thread	SW	L	D	L <sub>1</sub>
570048	21KA IW10 MPX	1/8"	14	36	16	9
570049	21KA IW13 MPX	1/4"	17	38	16	9
570050	21KA IW17 MPX	3/8"	19	38	16	7
570051	21KA IM12 MPX	M12x1,5	17	38	16	6
570052	21KA IM14 MPX	M14x1,5	17	38	16	6



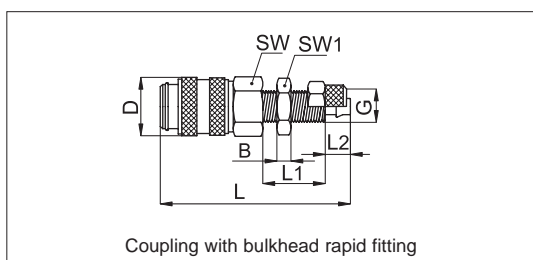
Code	Item	LW	SW	L	D	L <sub>1</sub>
570053	21KA TF04 MPX	4	14	46	16	17
570054	21KA TF06 MPX	6	14	46	16	17
570055	21KA TF08 MPX	8	14	46	16	17
570056	21KA TF09 MPX	9	14	46	16	17
570057	21KA TF10 MPX	10	14	46	16	17

LW = Tube internal Ø



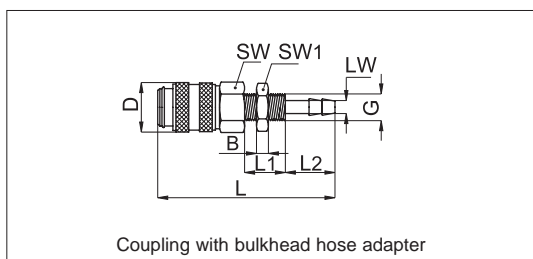
Code	Item	Tube Ø	SW	L	D	L <sub>1</sub>
570059	21KA KO06 MPX	6	14	42	16	13
570060	21KA KO08 MPX	8	14	42	16	13

Tube Ø = Tube external Ø



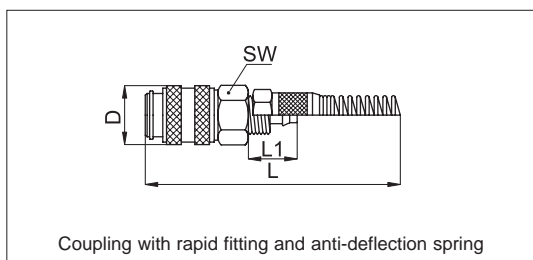
Code	Item	Tube Ø	SW	L	D	L <sub>1</sub>	L <sub>2</sub>	SW <sub>1</sub>	B	G
570061	21KA KS06 MPX	6	14	54	16	18	7	14	4	M10x1
570062	21KA KS08 MPX	8	17	54	16	18	7	17	4	M12x1

Tube Ø = Tube external Ø



Code	Item	LW	SW	L	D	L <sub>1</sub>	L <sub>2</sub>	SW <sub>1</sub>	B	G
570063	21KA TS04 MPX	4	14	60	16	14	17	14	4	M10x1
570064	21KA TS05 MPX	5	14	60	16	14	17	17	4	M12x1
570065	21KA TS06 MPX	6	17	60	16	14	17	17	4	M12x1
570066	21KA TS08 MPX	8	17	60	16	14	17	17	4	M12x1
572387	21KA TS10 MPX	10	17	60	16	14	17	19	4	M14x1

LW = Tube internal Ø



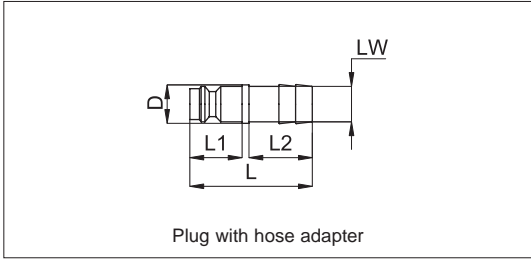
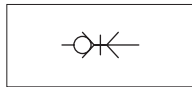
Code	Item	Tube Ø	SW	L	D	L <sub>1</sub>
570067	21KA KK06 MPX	6	14	125	16	13
570068	21KA KK08 MPX	8	14	130	16	13

Tube Ø = Tube external Ø

# Quick-lock couplings

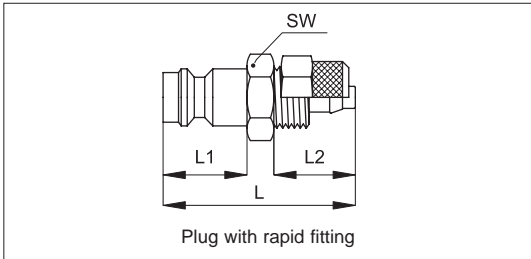
## Series 21, DN 5 = 20 mm<sup>2</sup>

In Brass



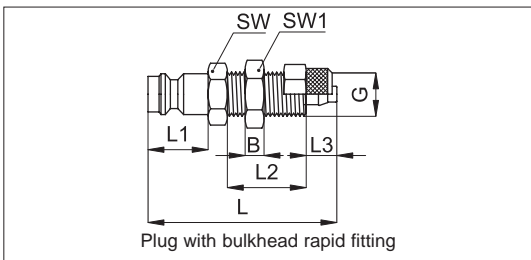
Code	Item	LW	L	D	L <sub>1</sub>	L <sub>2</sub>
570069	21SF TF04 MXX	4	32	9	14	17
570070	21SF TF05 MXX	5	32	9	14	17
570071	21SF TF06 MXX	6	32	9	14	17
570072	21SF TF08 MXX	8	32	9	14	17
570073	21SF TF09 MXX	9	33	10	14	17
570074	21SF TF10 MXX	10	33	12	14	17

LW = Tube internal Ø



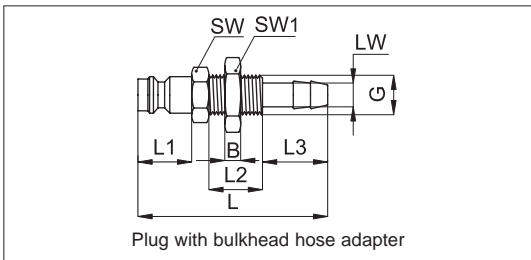
Code	Item	Tube Ø	SW	L	D	L <sub>1</sub>	L <sub>2</sub>	G
570076	21SF KO06 MXX	6	14	32	10	14	12	M10x1
570077	21SF KO08 MXX	8	17	32	12	14	12	M12x1
572377	21SF KO10 MXX	10	17	36	-	14	17	M16x1

Tube Ø= Tube external Ø



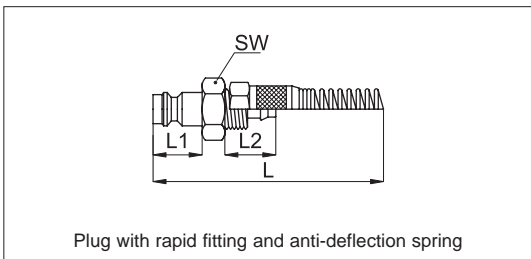
Code	Item	Tube Ø	SW	L	L <sub>1</sub>	L <sub>2</sub>	L <sub>3</sub>	SW <sub>1</sub>	B	G
570078	21SF KS06 MXX	6	14	44	14	18	7	14	4	M10x1
570079	21SF KS08 MXX	8	17	44	14	18	7	17	4	M12x1

Tube Ø= Tube external Ø



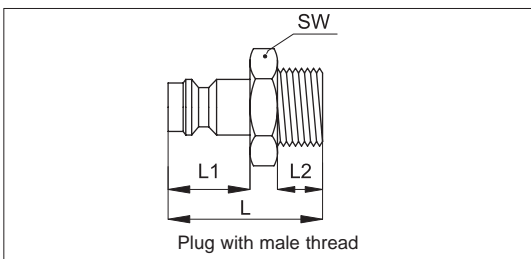
Code	Item	LW	SW	L	L <sub>1</sub>	L <sub>2</sub>	L <sub>3</sub>	SW <sub>1</sub>	B	G
570080	21SF TS04 MXX	4	14	50	14	14	17	14	4	M10x1
570081	21SF TS05 MXX	5	14	50	14	14	17	14	4	M10x1
570082	21SF TS06 MXX	6	14	50	14	14	17	17	4	M12x1
570083	21SF TS08 MXX	8	14	50	14	14	17	17	4	M12x1
570084	21SF TS09 MXX	9	14	50	14	14	17	17	4	M12x1
570085	21SF TS10 MXX	10	17	50	17	14	17	19	4	M14x1

LW = Tube internal Ø

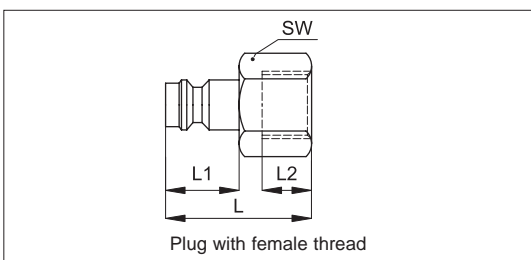


Code	Item	Tube Ø	L	L <sub>1</sub>	L <sub>2</sub>
570086	21SF KK06 MXX	6	115	14	12
570087	21SF KK08 MXX	8	120	14	12

Tube Ø= Tube external Ø



Code	Item	Thread	SW	L	L <sub>1</sub>	L <sub>2</sub>
570088	21SF AW10 MXX	1/8"	14	25	14	7
570089	21SF AW13 MXX	1/4"	17	28	14	9
570090	21SF AW17 MXX	3/8"	19	28	14	9
570091	21SF AD10 MXX	M10x1	14	26	14	8
570092	21SF AD12 MXX	M12x1,5	17	28	14	10
570093	21SF AD14 MXX	M14x1,5	17	28	14	10



Code	Item	Thread	SW	L	L <sub>1</sub>	L <sub>2</sub>
570094	21SF IW10 MXX	1/8"	14	25	14	8
570095	21SF IW13 MXX	1/4"	17	26	14	9
570096	21SF IW17 MXX	3/8"	19	27	14	9
570097	21SF IM10 MXX	M10x1	14	27	14	9
570098	21SF IM12 MXX	M12x1,5	17	27	14	10
570099	21SF IM14 MXX	M14x1,5	17	27	14	10