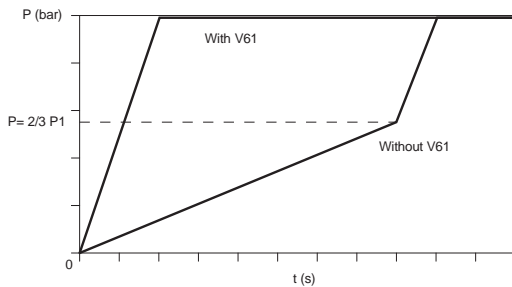


Accessories with integrated function

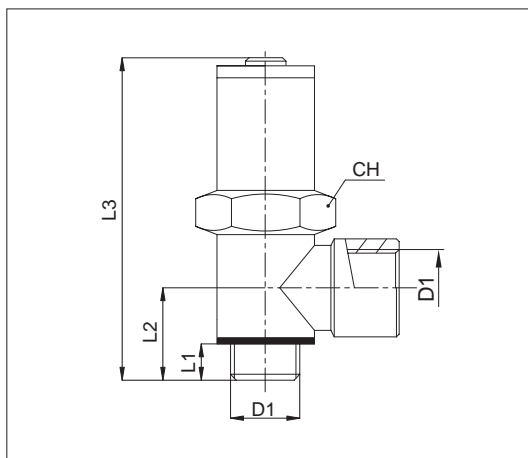
Slow starter



| Version | Symbol | Type |
|--------------|--------|------|
| Slow starter | | V61 |



This fitting allows for a progressive pressurization of the installation and prevents the actuators from being hit hard in case of sudden pressure feeding of the previously vented circuit. Depending on the desired spindle setting, the Slow Start Fitting will open gradually, pressure will progressively flow into the circuit and the actuators will go back to their working position without being hit. Pressure feeding speed is indeed determined by the rotation of the spindle. If turned clockwise, a very smooth pressurization will be achieved.



| Code | Item | D ₁ | D ₂ | L ₁ | L ₂ | L ₃ | CH |
|--------|-----------|----------------|----------------|----------------|----------------|----------------|----|
| 024475 | V61 00 14 | 1/4" | 1/4" | 6,5 | 17 | 66 | 20 |
| 024476 | V61 00 38 | 3/8" | 3/8" | 9 | 21 | 71,5 | 20 |
| 024477 | V61 00 12 | 1/2" | 1/2" | 10 | 24,5 | 74,5 | 25 |

| Technical data | |
|-----------------------------|---|
| Fluid | Compressed air |
| Pressure range | 3 ÷ 10 bar (P1) - Total opening 2/3 P1 |
| Temperature range | 0 °C ÷ + 70°C |
| Parallel threads | UNI - ISO 228 / 1 (BSP) |
| Flow rate at 6 bar (NI/min) | 1/4" = 1800 - 3/8" = 2400 - 1/2" = 2900 |
| Materials | Body: Nickel plated brass Spring: Stainless steel AISI 302 Seals: Nitrile rubber (NBR) - Polyurethane (PU) Rondello: Nylon (PA6) |